



opal
LIGHTING SYSTEMS



PRODUCT CODE: Band -X

FINISH: Sandy White, Sandy Silver or Sandy Anthracite

LAMP TYPE: LED

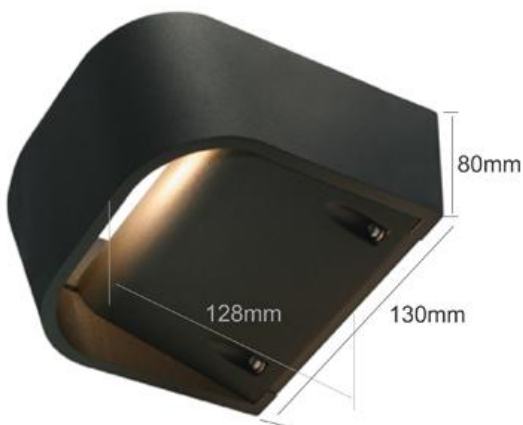
CONTROL GEAR: Integral

MOUNTING: Wall Exterior

DESCRIPTION:

- Cast Aluminium material
- 6 watt LED light source
- IP55 weatherproof
- 350 lumen output
- 3000K warm white colour temperature
- 50 000 hour life at 70% initial lumen output

DIMENSIONS:



Ph:02 95256999

Fx:02 9526 8555

Em:sales@opallighting.com.au

134 Taren point Rd Taren Point NSW 2229